



Desktop Engraver **DE-3**

Featuring laser-pointing technology, ethernet connectivity, automatic depth regulation and other intelligent enhancements, the DE3 is the smartest, most intuitive rotary engraver on the market.

Specifications

Work Table Size	305 mm x 230 mm
Maximum Work Area (Work Envelope)	X: 305 mm Y: 230 mm Z: 40 mm
XYZ Axis Drive System	Stepper motor, 3-axis simultaneous control
Operating Speed	XY Axis : 0.1-60 mm/sec. Z Axis : 0.1-30mm/sec.
Software resolution	0.01 mm/step
Spindle Motor	Brushless DC Motor
Spindle Speed	5,000-20,000 rpm
Tool Loading	Cutter Holder, Collet Type
Maximum Material Thickness	40 mm (38 mm when using the nose cone)
Connection	USB Ethernet (10 BASE-T/100 BASE-TX)
Machine Language	RML-1
Power Supply	Voltage and Frequency AC100V - 240V ± 10%, 50/60Hz (Overvoltage category: Category II, IEC60664-1)
Power Consumption	Rated Current 1.0 A
Operating Noise	80 W While Operating: 63 dB (or less), Standby: 40 dB (or less)
Machine Weight	35 kg
Installation Environment	Indoor use, altitude: 2000 m or less Temperature 5 to 40°C, humidity 35 to 80% (no dew condensation) Environment pollution degree: 2
Bundled Accessories	Power cord, power adapter, USB cable, nose cone unit (resin/metal components), nose unit set screw (fixing screw, spring), spare set screw (for cutter holder), Solid collet (ø 3.175 mm), spanner wrench, hex wrench, hex driver, adhesive sheet, dust collector adapter, DGS SHAPE Software Package CD, Setup Guide

DGS SHAPE

At the forefront of advanced machine manufacturing for 37 years, Roland provides practical and reliable technology with unmatched service and support.

DGS SHAPE, A Roland Company, further builds on this reliability promise by improving user experience with fast and effortless engraving machines, designed for those just starting out and for engraving experts looking for a more intuitive solution.

For detailed features and specifications visit www.dgshape.com/product/DE-3

DGS SHAPE

DE-3

DGS SHAPE Engraver

OVER 30 YEARS OF ENGRAVING EXPERTISE

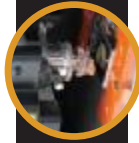
DGS SHAPE continues the legacy of Roland engraving with a new model that features laser-pointing technology, ethernet connectivity, automatic depth regulation, and other intelligent enhancements. The DE-3 is the smartest, most intuitive rotary engraver on the market.



by  Roland

Built to Make Engraving Easy

Automated features offer a simplified set-up and operation to quickly and precisely engrave delicate and tough materials.



Fast Production

Advanced surface detection enables quick and simple set-up, while a 20,000 rpm DC brushless motor engraves at top speed.



Laser Pointer

Automatically define the origin point and view a path preview for accurate personalization every time.



User Replaceable Spindle

Easily-applied nose cones can be added to the spindle to precisely regulate engraving depth and avoid material scratching.



Ethernet Connection

Machine operation can be managed remotely—offering LAN network connectivity for multiple machine engraving.



Dr. Engrave Plus

Open Architecture and New Software

The DE-3 works out-of-the-box with popular engraving software, industry standard tools, and materials. It also features Dr. Engrave Plus software that offers new user advantages.

AI.

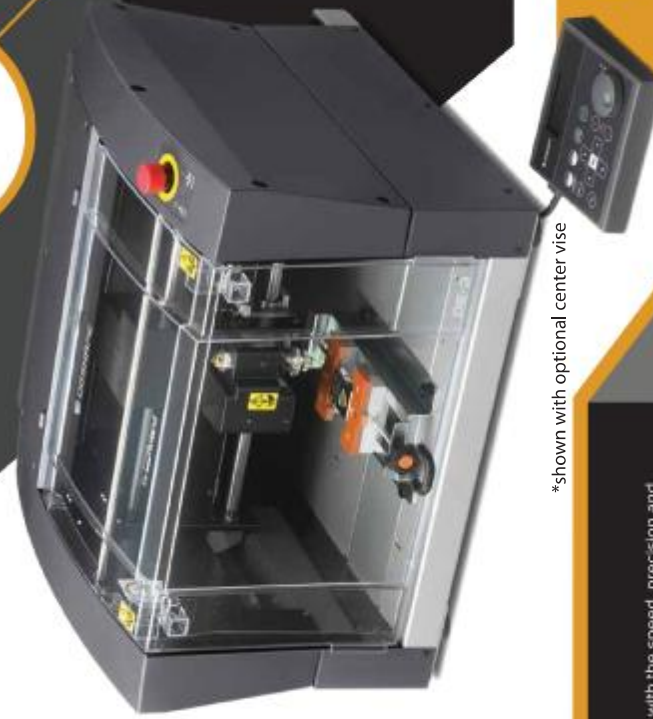
Supports AI files and standard graphic/vector data.

X

Import Excel and CSV databases for fast engraving of serial data jobs.



Enables standard engraving as well as surface levelling and hole drilling.



*shown with optional center vise



Hand-Held Control

Without the need for a computer, users can store job data and perform machine operations.

Discover More Applications with DGS SHAPE Engraving

Customize brass, aluminum, copper, engraving plastic, wooden items and more, with the speed, precision and ease of the powerfully compact DE-3.



The DGS SHAPE Brand Promise

DGS SHAPE is the brand name of the 3D business unit spun off from Roland DG with the core mission: "make innovation, make life better." DGS SHAPE delivers digital technologies that bring ideas to life, revolutionize business processes, and shape a better future. Our goal is to fuse human creativity with digital workflows to provide exceptional value across multiple endeavors, from individual craftsmanship to manufacturing, healthcare, and beyond.