

# PRODUCTIVITY AND SAVINGS THAT ARE UN-INKING BELIEVABLE

NEW *SOLJET EJ-640*

64" High-Volume Inkjet Printer



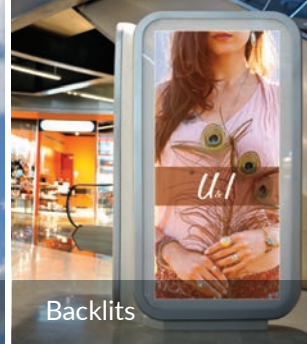
 Roland®



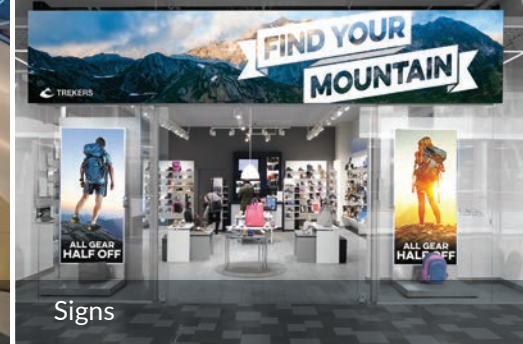
Wall Wraps



Banners



Backlights



Signs

## Count on high productivity, quality output and low operating costs with the SOLJET EJ-640.

When demand is high and business is cranking, your EJ-640 will be, too. Expect high-quality output of wall and vehicle wraps, posters, banners and indoor and outdoor signs, day in and day out. The best part? New Roland DG EJ inks, available in high-capacity 1-liter cartridges, cut running costs by up to 35% over other printers on the market, so you can maximize your productivity and profits.

More than a banner, poster or a wrap – it's your reputation coming out of the EJ-640. That's why every feature has been designed to ensure optimum results:

- Dual eight-channel Piezo inkjet heads house 180 nozzles per channel
- Offset-positioned print heads produce a large print swath for increased production and follow a mirrored pattern for optimum quality
- Advanced media feed controls input and output
- Rigid industrial design eliminates vibration
- Variable dot control achieves smooth gradations and deep image saturation on a broad range of media
- A revamped RIP, VersaWorks Dual – included with the EJ-640 – features a new core engine for better file processing, including files with transparencies



Vehicle Wraps



Window graphics



Posters

Pump out vibrant, eye-catching prints for high-volume applications.



With dual staggered print heads and a rigid industrial design, producing stunning results in your busy shop is par for the course.

## THE ALL NEW SOLJET EJ-640



### Plan for long-running, low-maintenance production.

- ✓ 1-Liter ink cartridges
- ✓ Integrated tri-heater system for fast ink drying
- ✓ Adjustable media feed for accurate centering and take-up
- ✓ Included take-up unit allows long unattended print runs
- ✓ Adjustable print heads support various media thicknesses
- ✓ Support of heavy roll media



To learn more about the EJ-640's advanced capabilities, view the video and more info at [www.rolanddga.com/EJ](http://www.rolanddga.com/EJ)

— NEW EJ INKS —

# CUT RUNNING COSTS BY UP TO 35%

The EJ runs optimally with Roland DG EJ inks in 4-color or 7-colors and high-capacity 1-liter cartridges. The result? High-volume printing and bold, exciting colors at costs up to 35% lower than the competition.



Dual CMYK 1-Liter Cartridges



CMYKcLmLk 1-Liter Cartridges

## Highlights & Specifications

- Supports media rolls up to 64" wide (1625mm) and 88 lbs (40kg)
- Dual staggered print heads
- Rigid industrial design limits vibration
- Quick-drying EJ inks in 1-Liter cartridges - CMYKKYMC or CMYKcLmLk
- Integrated tri-heater system
- Three-part wiper system protects print heads and prolongs life
- Roland OnSupport™ enables remote tracking of production status with automated e-mail notifications
- Seamlessly pairs with Roland GX cutter for print then cut workflow
- New VersaWorks® Dual RIP software included
- 1440 dpi maximum resolution
- Standard mode (vinyl) print speeds:
  - 4 colors: 215 sqft/hr (20m<sup>2</sup>/h) - 720x720dpi, 6 pass
  - 7 colors: 108 sqft/hr (10m<sup>2</sup>/h) - 720x720dpi, 12 pass
- Power supply:
  - AC 100 to 120 V ±10%, 11 A, 50/60 Hz or
  - AC 220 to 240 V ±10%, 5.5 A, 50/60 Hz
- Power consumption:
  - 1450w during operation, 75w in sleep mode
- Dimensions:
  - 108"W x 31"D x 59.9"H (2750 x 785 x 1520mm)



For detailed features and specifications, and a free print sample,  
visit [www.rolanddga.com/EJ](http://www.rolanddga.com/EJ)

Get social with us.



Imagine.  Roland®